

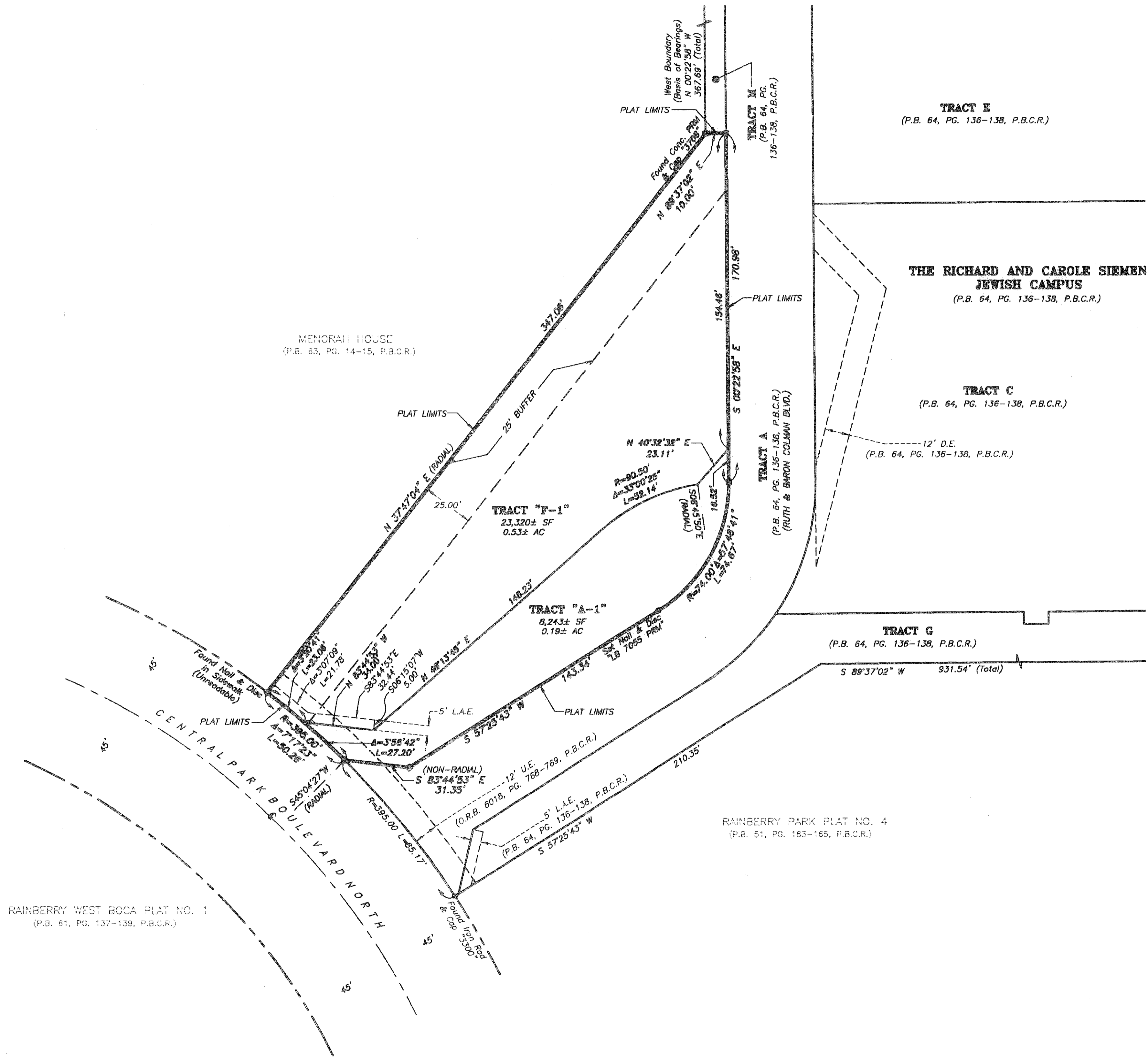
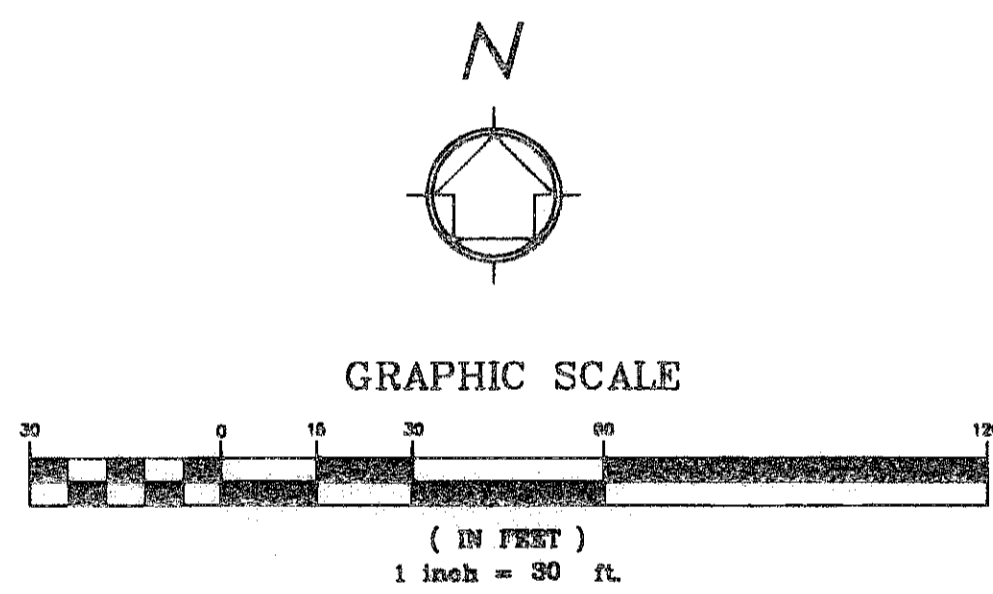
RICHARD AND CAROLE SIEMENS JEWISH CAMPUS REPLAT NO. 1

A REPLAT OF TRACT F, THE RICHARD AND CAROLE SIEMENS JEWISH CAMPUS, PLAT BOOK 64, PAGES 136 THROUGH 138 INCLUSIVE OF THE PUBLIC RECORDS, PALM BEACH COUNTY, FLORIDA, LYING AND SITUATE IN SECTION 19, TOWNSHIP 47 SOUTH, RANGE 42 EAST, PALM BEACH COUNTY, FLORIDA.

JANUARY 2009

56

State of Florida }
County of Palm Beach } SS
THIS PLAT WAS FILED FOR
RECORD AT _____ M.
THIS _____ DAY OF _____
A.D. 2008 AND DULY RECORDED
IN PLAT BOOK _____ ON
PAGES _____ THROUGH _____
SHARON R. BOCK
CLERK AND COMPTROLLER
BY: _____
DEPUTY CLERK
SHEET 2 OF 2 SHEETS



- LEGEND:**
- AC = Acres
 - ⊕ = Center line
 - Conc. = Concrete
 - Δ = Delta (Central Angle)
 - D.E. = Drainage Easement
 - L.A.E. = Limited Access Easement
 - LB = Licensed Surveying Business
 - L = Length of Arc
 - O.R.B. = Official Records Book
 - P.B.C.R. = Palm Beach County Records
 - P.B. = Plat Book
 - PG. = Page
 - PRM = Permanent Reference Marker
 - R = Radius
 - SF = Square Feet
 - U.E. = Utility Easement
 - = Set 4"x4" Concrete (PRM) w/Aluminum Disc Stamped "LB 7055" except as noted.

W Wantman Group, Inc.
Engineering ♦ Surveying ♦ Mapping
2035 VISTA PARKWAY, SUITE 100, WEST PALM BEACH, FL 33411
(888) 908-2220 phone (561) 687-1110 fax
CERT No. 8081 - LB No. 7055
JACKSONVILLE - ORLANDO - FORT ST. LUCIE - TAMPA
THIS INSTRUMENT WAS PREPARED BY DEREK G. ZEMAN, P.S.M.
PROFESSIONAL SURVEYOR AND MAPPER, LICENSE NO. 5655
FOR THE FIRM: WANTMAN GROUP, INC.